



Fisheries and Oceans
Canada

Pêches et Océans
Canada

Canadian
Coast Guard

Garde côtière
canadienne

Notices to Mariners

Edition No. 08/2025
August 29, 2025



Safety First, Service Always

Monthly Eastern Edition

Canada 

Notices to Mariners – Monthly Eastern Edition
Edition No. 08/2025

Aussi disponible en français :
Avis aux navigateurs – Édition mensuelle de l'Est
Édition n° 08/2025

Published under the Authority of:

Canadian Coast Guard Programs
Aids to Navigation and Waterways
Fisheries and Oceans Canada
Montreal, QC H2Y 2E7

For more information, contact DFO.Notmar-Notmar.MPO@dfo-mpo.gc.ca.

© His Majesty the King in Right of Canada,
as represented by the Minister of Fisheries, Oceans
and the Canadian Coast Guard, 2025.

Cat. No. Fs152-8E-PDF (Electronic PDF, English)
ISSN 2817-0075

Cat. No. Fs152-8F-PDF (Electronic PDF, French)
ISSN 2817-0083

A web version is available here:

[Notices to Mariners – Monthly Editions](#) (English)

[Avis aux navigateurs – Publications mensuelles](#) (French)

Explanatory Notes – Notices to Mariners (NOTMAR)

Geographical positions refer directly to the graduations of the largest scale Canadian Hydrographic Service chart (unless otherwise indicated).

Bearings refer to the true compass and are measured clockwise from 000° (North) clockwise to 359°; those relating to lights are from seaward.

Visibility of lights is that in clear weather.

Depths - The units used for soundings (metres, fathoms or feet) are stated in the title of each chart.

Elevations are normally given above Higher High Water, Large Tide (unless otherwise indicated).

Distances may be calculated as follows:

- 1 nautical mile = 1,852 metres (6,076.1 feet)
- 1 statute mile = 1,609.3 metres (5,280 feet)
- 1 metre = 3.28 feet

Temporary and Preliminary Notices to Mariners – Section 1A of *Notices to Mariners*

These notices are indicated by a (T) or a (P), respectively. Please note that nautical charts are not amended by the Canadian Hydrographic Service for temporary (T) and preliminary (P) notices. It is recommended that mariners chart these corrections in pencil. For the list of charts affected by (T) & (P) notices, please refer to the current [Notices to Mariners - Monthly Summary of Temporary and Preliminary Notices](#) publication.

Suggestions and Corrections Form

This form is specifically for suggestions and corrections to Notices to Mariners publications. It is available [online](#) and also in [fillable PDF format](#) included with the monthly publication ZIP file.

To submit comments and suggestions on possible improvements to the various publications and services: DFO.Notmar-Notmar.MPO@dfo-mpo.gc.ca.

To report chart discrepancies and/or corrections to the *Canadian Sailing Directions* booklets: Fill out the [Marine Information Reporting Form](#) and/or email chsinfo@dfo-mpo.gc.ca.

To report emergencies or navigational hazards: [Contact your nearest MCTS centre](#)

- VHF channel 16 (156.8 MHz)
- MF/HF frequency 2182 kHz/4125 kHz (where available)
- *16 on a cellphone (where available)

NOTMAR Website – Monthly Editions, Chart Corrections and Chart Patches

The NOTMAR website allows users to access the [monthly publications](#), [chart corrections](#), and [chart patches](#).

Users can subscribe for free to the [email notification service](#) to receive notifications when charts of interest are updated, including their patches, as well as when a new Monthly Edition of *Notices to Mariners* is published.

In addition, the monthly publication and related files to download, such as chart patches, can be obtained all together through the download of a single ZIP file.

Explanatory Notes – Canadian Hydrographic Service (CHS)

Chart Corrections – Section 2 of *Notices to Mariners*

Corrections to nautical charts will be listed in numerical order by chart number. Each chart correction listed applies only to that particular chart. Related charts, if any, will have their own specific correction listed separately.

Users should also refer to CHS *Chart 1: Symbols, Abbreviations and Terms* for additional information pertaining to the correction of charts.

The illustration below describes the elements that will comprise a typical Section 2 chart correction:

	Chart Number	Chart Title	Chart latest new edition date	Horizontal Chart Datum	Last Correction
Weekly Chart Correction Date	1312	Lac Saint-Pierre - New Edition - 10-MAY-2019 - NAD 1983			
	05-AUG-2022				LN/D. 24-SEP-2021
	Amend				46°03'32.4"N 073°03'21.6"W
		(See Chart 1 P16)		(Q2022035) LL(2177)	DFO(6410690-01)
	Chart Action	Chart 1 Reference No.	CCG Reference No.	List of Lights No.	CHS Reference No.

The last correction number is identified with the **LN/D** or **Last Notice to Mariners Number / Date**.

Mariners are advised that only the most critical changes that directly affect safety to navigation are issued in "Section 2 – Chart Corrections." This limitation is required to ensure that charts remain as clear and easy to read as possible. As a result, mariners may see minor discrepancies of a non-critical nature between information in official publications. For example, a small change in the nominal range or focal height of a light may not result in the production of a chart correction in *Notices to Mariners*, but may result in a correction in the [List of Lights, Buoys and Fog Signals](#) publication.

Note: In the case of a discrepancy between information provided on CHS charts relating to aids to navigation, and the *List of Lights, Buoys and Fog Signals* publication, the latter shall be deemed as containing the most up-to-date information.

Explanatory Notes – Marine Communications and Traffic Services (MCTS)

Navigational Warnings / Notices to Shipping

The Canadian Coast Guard (CCG) is implementing a number of changes to the aids to navigation system in Canada.

These changes are advertised as Navigational Warnings, formerly called Notices to Shipping¹, that are broadcast by the CCG, and are then followed up with Notices to Mariners, then charts are updated by hand correction, reprints or new editions.

Mariners are advised that all relevant Navigational Warnings (NAVWARN) should be kept until superseded by Notices to Mariners or through revised charts issued by the Canadian Hydrographic Service (CHS).

NAVWARN are accessible on the applicable regional page on the [CCG Navigational Warnings](#).

CHS is reviewing the impact of these changes with CCG and together are preparing an action plan on the issuing of chart revisions.

For further information, contact your regional NAVWARN Issuing Desk.

Atlantic Region (North) *Port aux Basques MCTS Centre “N” Series NAVWARN Canadian Coast Guard 49 Stadium Rd. P.O. Box 99 Port aux Basques, NL A0M 1C0 Telephone: 709-695-2168 or 1-800-563-9089 Facsimile: 709-695-7784 Email: NAVWARN.MCTSPortAuxBasques@innav.gc.ca	Central Region *Prescott MCTS Centre “C” Series NAVWARN Canadian Coast Guard 401 King Street West P.O. Box 1000 Prescott, ON K0E 1T0 Telephone: 613-925-0666 Facsimile: 613-925-4519 Email: NAVWARN.MCTSPrescott@innav.gc.ca
Atlantic Region (South) *Sydney MCTS Centre “M” Series NAVWARN Canadian Coast Guard 1190 Westmount Road Sydney, NS B1R 2J6 Telephone: 902-564-7751 or 1-800-686-8676 Facsimile: 902-564-7662 Email: NAVWARN.MCTSSydney@innav.gc.ca	Arctic Region *Iqaluit MCTS Centre <i>Operational from approximately mid-May until late December.</i> “A” Series NAVWARN Canadian Coast Guard P.O. Box 189 Iqaluit, NU X0A 0H0 Telephone: 867-979-5269 Facsimile: 867-979-4264 Email: NAVWARN.MCTSIqaluit@innav.gc.ca

*Service available in English and in French.

¹ The expression “Notice to Shipping” was changed to “Navigational Warning” in January 2019.

Table of Contents

Section 1: General and Safety Information	1
*505/23 Canadian Hydrographic Service – Magnetic Declination Calculations	1
*1207/23 Canadian Hydrographic Service – Inappropriate Geographical Names Review Process	1
*405/25 Saguenay–St. Lawrence Marine Park - Beluga Whale Protection: Slowdown Area at the Mouth of the Saguenay Fjord and Area Closure at Baie Sainte-Marguerite	1
*406/25 Saguenay–St. Lawrence Marine Park and Surrounding Waters – Whale Protection	4
*519(P)/25 Scott Islands – Paper Chart to be Discontinued	5
*601/25 Protecting the North Atlantic Right Whale: Speed Restriction Measures in the Gulf of St. Lawrence	6
*801/25 Canadian Hydrographic Service – Nautical Charts	14
*802/25 Canadian Hydrographic Service – Electronic Navigational Charts	14
*803/25 Port de Montréal – Daybeacon Permanently Discontinued	16
*804/25 Lac Saint-Pierre – Daybeacon Permanently Discontinued	16
*805/25 Jackfish Bay to/à St. Ignace Island – Unlit Buoy Repositioned	17
Section 1A: Temporary and Preliminary Notices	18
Reminder – Comment Period for Active Preliminary Notices	18
*808(T)/25 Sorel-Tracy à/to Otterburn-Park – Obstruction : Repair Work	18
*809(P)/25 Tadoussac à/to Cap Éternité – Aids to Navigation to be Abandoned	19
*810(P)/25 Plans, Baie des Chaleurs/Chaleur Bay (côte nord/North Shore) – Aids to Navigation to be Abandoned	19
*811(T)/25 Lac Saint-Louis – Marine works: Construction and Drilling Operations	20
*812(T)/25 Carleton Island to/au Charity Shoal – Obstruction: Submerged Object	20
*813(T)/25 Ottawa to/à Smiths Falls – Marine Works: Bridge Construction	20
*814(T)/25 Whitby Harbour – Marine Works: Dredging Operations	20
*815(T)/25 Lake Ontario/Lac Ontario (Western Portion/Partie Ouest) – Marine Works	21
*816(P)/25 Bay of Quinte – Buoys to be Discontinued	22
Section 2: Chart Corrections	23
Section 3: Radio Aids to Marine Navigation Corrections	30
*817/25 Radio Aids to Marine Navigation 2025 (Atlantic, St. Lawrence, Great Lakes, Lake Winnipeg, Arctic and Pacific)	30
Section 4: Canadian Sailing Directions Corrections	32
Section 5: List of Lights, Buoys and Fog Signals Corrections	33

Numerical Index of Canadian Charts Affected

This numerical index lists all nautical charts mentioned in this monthly edition of Notices to Mariners. Only charts appearing in Section 2 of this publication require a chart correction. The appearance of charts in all other sections, particularly those related to the correction of other nautical publications, is included here for reference.

Chart No.	Pages	Chart No.	Pages	Chart No.	Pages
1203	19	4236	26		
1310	16	4237	26		
1312	16	4429	26		
1314	14	4530	26		
1315	23	4642	26, 27		
1316	23	4644	27		
1317	18, 23	4679	18		
1350	18, 33	4820	27		
1429	23, 24	4827	27		
1430	20, 24	4839	27		
1439	20	4846	27, 28		
1512	20	4862	28		
1550	24, 34	4912	28, 33		
2011	22	4921	19		
2016	22	4940	28		
2019	22	6021	28		
2020	22	6217	29		
2028	24	6267	29		
2049	20	6430	14		
2077	21	7193	29		
2181	14	7194	29		
2225	24	8007	29		
2303	17	8014	29		
3625	5				
4003	24, 25				
4011	25				
4013	25				
4016	25				
4017	25				
4099	25				
4116	25				
4117	26				
4118	18				
4203	26				

Section 1: General and Safety Information

***505/23 Canadian Hydrographic Service – Magnetic Declination Calculations**

(Recurrent publication of notice *505/23, originally published in the *Notices to Mariners – Monthly Eastern Edition* 05/2023 publication.)

Mariners are advised that CHS has adopted the harmonized World Magnetic Model (WMM), as found on the NCEI/NOAA website. Old compass rose declination information on CHS navigational products can be updated using this website: <https://www.ngdc.noaa.gov/geomag/calculators/magcalc.shtml#declination>. While the differences in the model declinations are small each year, they can become more significant over a large period of time.

***1207/23 Canadian Hydrographic Service – Inappropriate Geographical Names Review Process**

(Recurrent publication of notice *1207/23, originally published in the *Notices to Mariners – Monthly Eastern Edition* 12/2023 publication.)

The records of the Canadian Hydrographic Service could contain geographical names that may be considered inappropriate, offensive and derogatory. Geographical naming authorities are in the process of addressing many offensive place names, the review process is underway. For more information, about inappropriate geographical names, please see the [following announcement](#).

***405/25 Saguenay–St. Lawrence Marine Park - Beluga Whale Protection: Slowdown Area at the Mouth of the Saguenay Fjord and Area Closure at Baie Sainte-Marguerite**

(Recurrent publication of notice *405/25, originally published in the *Notices to Mariners – Monthly Eastern Edition* 04/2025 publication.)

The Saguenay–St. Lawrence Marine Park and its surrounding area are at the heart of endangered beluga whale critical summer habitat. Marine mammal protection measures have been put in place in accordance with the *Marine Activities in the Saguenay–St. Lawrence Marine Park Regulations* within the limits of the Marine Park.

However, important feeding, calving and rearing areas for beluga whales require greater protection to ensure the recovery of the species. The portion of the Saguenay situated between the mouth of the Fjord and Baie Sainte-Marguerite is one of the areas most used by females and their young from May to October. The mouth of the Saguenay is known as a feeding ground and Baie Sainte-Marguerite as a calving and rearing area.

In order to prevent collisions with beluga whales, a compulsory 15-knot slowdown area is in effect from May 1st to October 31st at the mouth of the Saguenay. To ensure tranquility for female belugas and their young during the critical calving period, access to Baie Sainte-Marguerite is prohibited to all vessels from June 21st to September 21st, except for special authorizations (see description below).

For safety reasons, the slowdown area measure at the mouth of the Saguenay Fjord does not apply to cargo ships (see the monthly edition of Notice to Mariners from May to October for voluntary protection measures in the St. Lawrence Estuary). An enhanced vigilance is, however, recommended to all navigators between the mouth of the Saguenay Fjord and Baie Sainte-Marguerite for the protection of beluga whales.

For more information on the Saguenay–St. Lawrence Marine Park, see notice 5C of the *Notices to Mariners Annual Edition 2025* or visit the [Saguenay-St. Lawrence Marine Park website](#).

REGULATORY PROTECTION MEASURES — BELUGA WHALE

Entire Marine Park Territory:

- When beluga whales are less than half a nautical mile (926 metres) from a motorized vessel, the vessel must maintain a steady speed of between 5 and 10 knots.
- All vessels, including human-powered vessels (kayaks and canoes), must continue to move forward and maintain their heading.
- All vessels must maintain a minimum distance of 400 metres from beluga whales at all times.

For more information concerning the regulations, consult the [“Navigate” section of the Saguenay-St. Lawrence Marine Park website](#).

Mouth of the Saguenay Fjord (Figure 1) — Slowdown Area (area crosshatched in red):

- Maximum speed at the mouth of the Saguenay between buoys S7 and S8 and the ferry docks between Baie-Sainte-Catherine and Tadoussac is 15 knots from May 1st to October 31st.

Baie Sainte-Marguerite (Figure 2) — Area Closure (red area):

- From June 21st to September 21st, vessels must not enter the red area, which follows a line between Cap Nord-Ouest and Cap Sainte-Marguerite.
- Special authorizations are granted only for kayaks, canoes and recreational fishermen who must travel without stopping along a corridor within 10 metres of the shore or in shallow areas.

VOLUNTARY PROTECTION MEASURES

Baie Sainte-Marguerite sector (Figure 2) — Transit Area (area crosshatched in yellow):

- From June 21st to September 21st, navigation in this area is recommended at a speed of between 5 and 10 knots without stopping.

The purpose of this transit area is to favour respect of the *Marine Activities in the Saguenay–St. Lawrence Marine Park Regulations*, since beluga whales are often present in the Baie Sainte-Marguerite sector.

Information

All incidents, including collisions with whales, must be reported without delay by calling 1-866-508-9888. For any other situation concerning a marine mammal that is either dead or in trouble, contact the Marine Mammal Emergency Response Network at 1-877-722-5346, or use VHF channel 16.

Figure 1

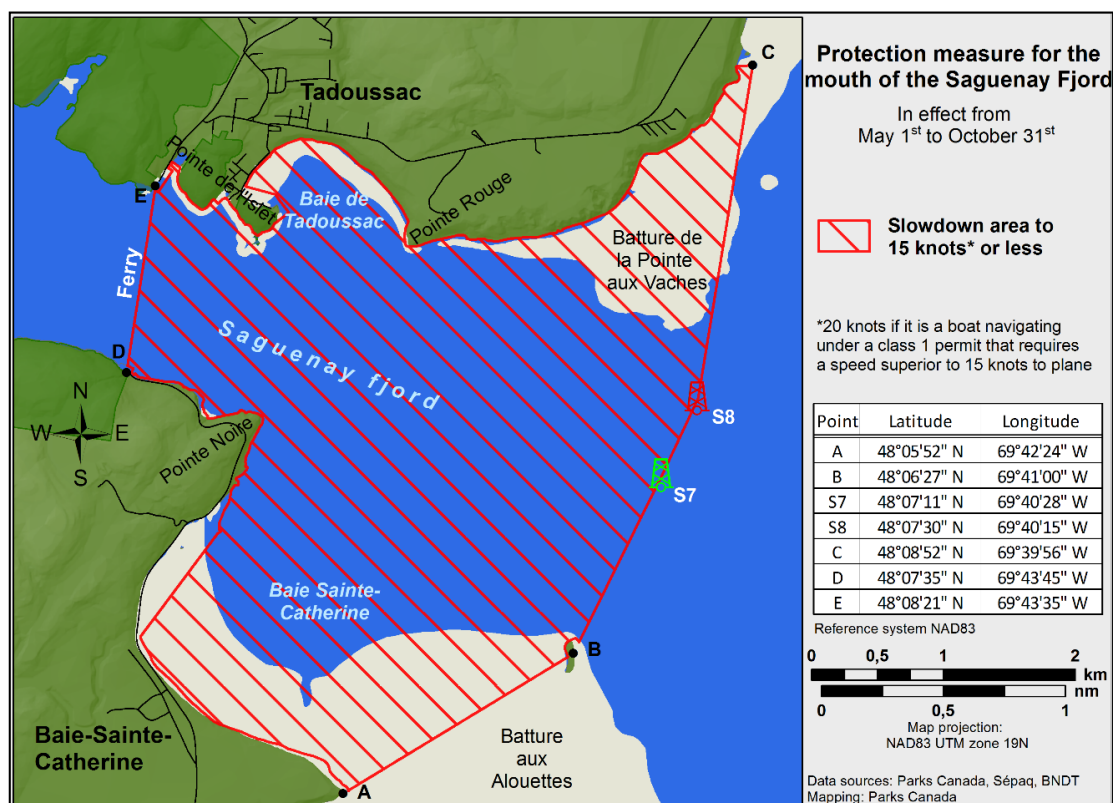
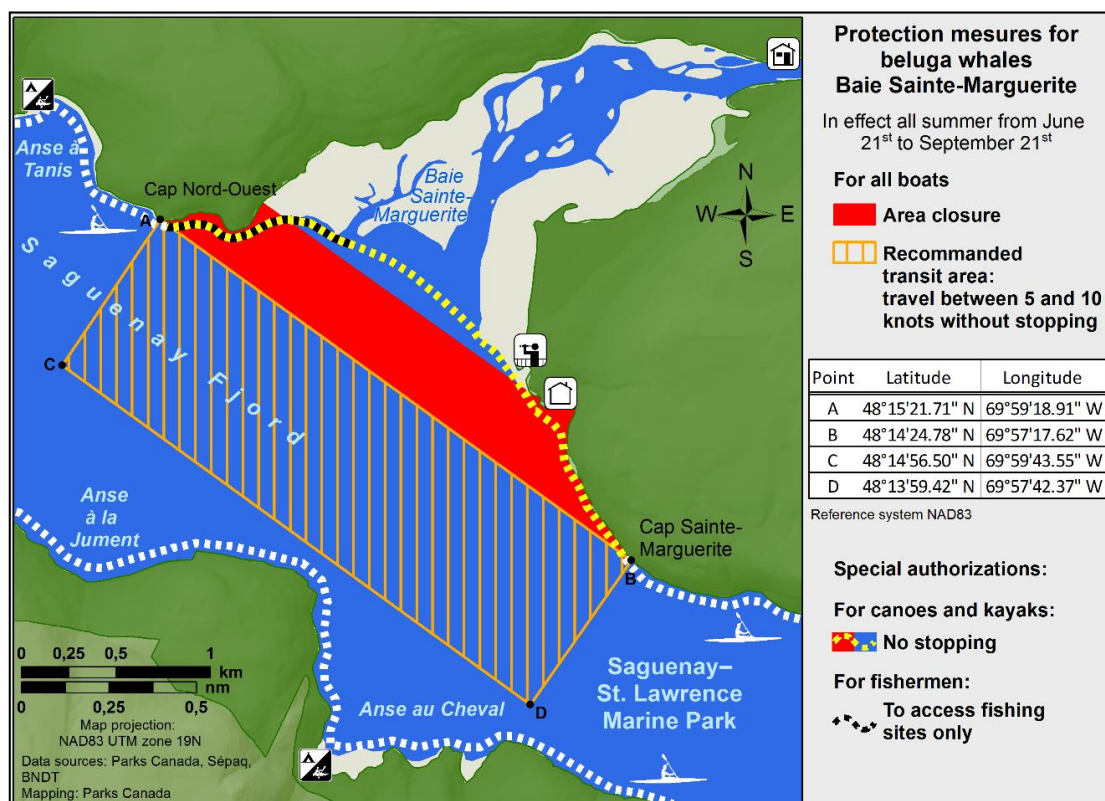


Figure 2



***406/25 Saguenay–St. Lawrence Marine Park and Surrounding Waters – Whale Protection**

(Recurrent publication of notice *406/25, originally published in the *Notices to Mariners – Monthly Eastern Edition* 04/2025 publication.)

The waters in and around the Saguenay–St. Lawrence Marine Park are well known for the resident endangered beluga population and the wide diversity of whales that migrate there to feed, particularly between April and November.

REGULATORY PROTECTION MEASURES

All whale species that are found in the St. Lawrence are protected under the *Marine Mammal Regulations*, pursuant to the *Fisheries Act*. Within the boundaries of the Marine Park, specific measures are set out in the *Marine Activities in the Saguenay–St. Lawrence Marine Park Regulations*, pursuant to the establishment of the *Saguenay–St. Lawrence Marine Park Act*. Any collision with a marine mammal within the Marine Park must immediately be reported to a park warden at 1-866-508-9888. For collisions that occur outside the Marine Park or for any situation involving a marine mammal that is dead or in trouble, contact the emergency network at 1-877-722-5346 or on VHF channel 16.

For more information on the Saguenay–St. Lawrence Marine Park, see notice 5C of the *Notices to Mariners Annual Edition 2025*.

VOLUNTARY PROTECTION MEASURES

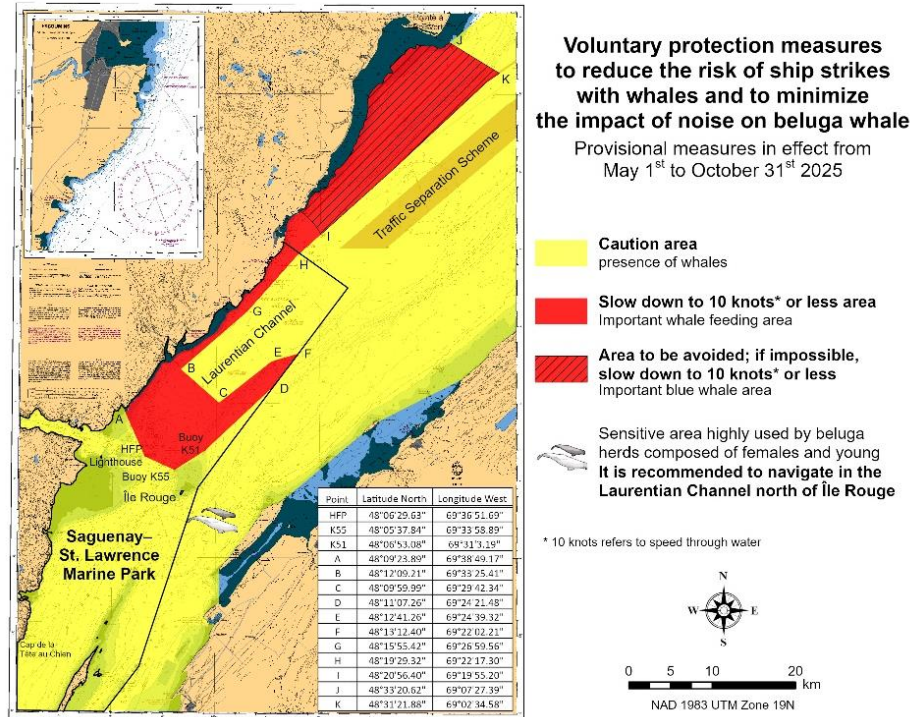
Provisional measures in effect from May 1 to October 31, 2025. See map at the end of this notice.

These measures apply to merchant vessels and cruise ships between Pointe à Boisvert and Cap de la Tête au Chien to prevent collisions with whales. These measures should only be taken when they will not jeopardize navigational safety.

Caution area (yellow area): To reduce the risk of collisions with whales that can be present anywhere in this area, heightened vigilance of navigators is critical. Posting a lookout is recommended in order to increase the chances of seeing the whales and thus taking necessary measures to avoid them. If bypassing the whales is not possible, slow down and wait for the animals to move away to a distance greater than 400 metres (0.215 nautical miles) before resuming original speed. It is more difficult to see the animals at night therefore increased caution is recommended.

Slow down to 10 knots or less area (red area): To reduce the risk of collisions with whales in this feeding area, it is recommended that vessels slow down to a maximum speed through the water of 10 knots and post a lookout. It is further recommended to remain in the Laurentian Channel to the north of Île Rouge to minimize the impact of noise in a sensitive area south of this island, which is highly frequented by herds of beluga whales composed of females and young.

Area to be avoided (hatched red area): To reduce noise and the risk of collisions with whales, vessels should avoid transiting through this area which is highly frequented by blue whales, an endangered species. If the area cannot be avoided, slow down to a speed through the water of 10 knots or less.



*519(P)/25 Scott Islands – Paper Chart to be Discontinued

(Recurrent publication of notice *519(P)/25, originally published in the *Notices to Mariners – Monthly Eastern Edition 05/2025* publication.)

Reference chart: 3625

The Canadian Hydrographic Service proposes to permanently discontinue paper chart 3625 called Scott Islands.

Mariners and other interested parties are invited to comment on this action until August 31, 2025.

Comments should be directed to the [Canadian Hydrographic Service email address](#).

Any objections raised must state the facts on which they are based and should include supporting information on safety, commerce and public benefit.

***601/25 Protecting the North Atlantic Right Whale: Speed Restriction Measures in the Gulf of St. Lawrence**

(Recurrent publication of notice *601/25, originally published in the *Notices to Mariners – Monthly Eastern Edition* 06/2025 publication.)

Reference: Notice 501/25 is cancelled

Purpose

This notice describes the speed and navigational restriction zones that vessels must follow in the Gulf of St. Lawrence.

The Government of Canada has established these zones to reduce the risk of vessel colliding with North Atlantic right whales (NARW).

Background

Due to changing migration patterns of North Atlantic right whales and their increased presence in the Gulf of St. Lawrence, the Government of Canada has set seasonal speed restrictions in specific zones. These speed restrictions zones are defined as “static zones”, “dynamic shipping zones”, “seasonal management areas”, a “voluntary seasonal slowdown zone” and a “restricted area”. [See the map below for details.](#)

Note: Vessels **must follow** Navigational Warnings outlining the speed restrictions. The *Interim Order No.3 for the Protection of North Atlantic Right Whales (Eubalaena Glacialis) in the Gulf of St. Lawrence, 2025* enables the issuance of Navigational Warnings (NAVWARNs) imposing speed restrictions and navigation restrictions.

Speed restriction zones are described in monthly Notices to Mariners (NOTMARs), which are published by the Canadian Coast Guard. The status of these zones is broadcasted through NAVWARNs, which are published by the Coast Guard’s Marine Communications and Traffic Services Centres.

CHANGES TO SPEED RESTRICTION ZONES AND MEASURES

Based on consultations with industry and on scientific data, changes to the speed restriction zones are effective since April 16th, 2025, while the restricted area will be implemented based on whale presence.

A voluntary seasonal slowdown of 10.0 knots over the ground spanning from Cabot Strait (a line running from Cape North NS to Cape Ray NL) to the eastern edge of dynamic shipping zone E will be implemented at the beginning and end of the North Atlantic right whale season (Spring and fall).

Please check the latest NAVWARN for all speed restrictions currently in effect.

SPEED RESTRICTION MEASURES FOR 2025

These restrictions are in effect from **April 16 to November 15, 2025.**

Note: This is the third interim order for the 2025 North Atlantic Right Whale (NARW) season, which started on April 16th, during the 2025 federal election period. The first was signed for a 30-day period, to provide protection for the species, while meeting Caretaker Convention requirements. The second Interim Order extended the protective measures for 30 days to provide continuity while Cabinet is formed. The third interim order was signed to cover the remaining of the NARW season until November 15th, 2025.

Exceptions

The following exception will apply to **all** measures:

- a) a vessel in distress or providing assistance to a person or a vessel in distress;
- b) a government vessel being used:
 - i) for law enforcement activities;
 - ii) for search and rescue operations; or

- iii) to ensure the competency of the crew or the operational readiness of the vessel or crew with respect to such activities or operations.

STATIC ZONES

In the static zones, **all** vessels above **13 m** in length overall (LOA) must proceed at a speed of not more than 10.0 knots over the ground.

Exclusions

Air cushion vessels operated by or on behalf of the Government of Canada that are engaged in ice-clearing activities from April to June in and around Chaleur Bay are exempted when in operation.

36.57 m (20-fathom) shallow water protocol exclusion

Vessels engaged in any commercial fishing activity may proceed at a safe operational speed in waters not more than 36.57 m (20 fathom) deep within the static zones.

If a notice to fish harvesters and a NAVWARN state that at least one North Atlantic right whale has been detected in waters within a static zone or its associated buffer zone that are not more than 36.57m deep, the speed limit of 10.0 knot over the ground will apply in the concerned zone(s) to all vessels above 13m in length overall (LOA). The speed restriction will be in effect for 15 days after the day on which the whale was detected. The buffer zones associated with the static zones are located 5 miles north and south of their adjacent border in waters less than 36.57m deep.

Coordinates for the northern static zone:

- 50° 20' N 065° 00' W
- 49° 13' N 065° 00' W
- 48° 40' N 064° 13' W
- 48° 40' N 062° 40' W
- 48° 03' N 061° 07.5' W
- 47° 58.1' N 061° 03.5' W
- 48° 00' N 061° 00' W
- 49° 04' N 061° 00' W
- 49° 04' N 062° 00' W
- 49° 43' N 063° 00' W
- 50° 20' N 063° 00' W

Coordinates for the southern static zone:

- 48° 40' N 065° 00' W
- 48° 40' N 062° 40' W
- 48° 03' N 061° 07.5' W
- 47° 58.1' N 061° 03.5' W
- 47° 10' N 062° 30' W
- 47° 10' N 065° 00' W

DYNAMIC SHIPPING ZONES

There are five dynamic shipping zones (DSZ) located in the routing systems north and south of Anticosti Island: A, B, C, D and E

Coordinates for the dynamic shipping zones:

Zone A

- 49° 41' N, 065° 00' W
- 49° 20' N, 065° 00' W
- 49° 11' N, 064° 00' W
- 49° 22' N, 064° 00' W

Zone B

- 49° 22' N, 064° 00' W
- 49° 11' N, 064° 00' W
- 48° 48' N, 063° 00' W
- 49° 00' N, 063° 00' W

Zone C

- 49° 00' N, 063° 00' W
- 48° 48' N, 063° 00' W
- 48° 24' N, 062° 00' W
- 48° 35' N, 062° 00' W

Zone D

- 50° 16' N, 064° 00' W
- 50° 00' N, 064° 00' W
- 49° 56' N, 063° 00' W
- 50° 16' N, 063° 00' W

Zone E

- 48° 35' N 062° 00' W
- 48° 24' N 062° 00' W
- 48° 03' N 061° 07.5' W
- 47° 58.1' N 061° 03.5' W
- 48° 00' N 061° 00' W
- 48° 10.5' N 061° 00' W

When a North Atlantic right whale is detected in a dynamic shipping zone or in the buffer zones, located 5 nautical miles south or 2.5 nautical miles from the eastern and western edges of the dynamic shipping zones:

- All vessels will be notified via a NAVWARN; and
- Vessels above **13 m** in length overall (LOA) must proceed at a speed of not more than 10.0 knots over the ground within that zone.

Even though dynamic shipping zones overlap with static zones, vessels can travel at a safe operational speed in dynamic shipping zones when they are not under speed restriction. Mariners must also keep in mind that North Atlantic right whales may be nearby.

SPEED RESTRICTIONS IN THE DYNAMIC SHIPPING ZONES

The detection of North Atlantic right whales in one or more dynamic shipping zone(s), or in their buffer zones, will trigger a speed restriction in the concerned zone(s). The speed restriction in the dynamic shipping zone(s) will be in effect for 15 days from the date of detection. In the event of a new North Atlantic right whale detection occurring in the last 7 days of the 15-day slowdown period, the speed restriction will be extended for an additional 15 days from the date of the new detection. This would continue until no NARW are detected.

When a NAVWARN is issued implementing a speed restriction in one or more dynamic shipping zone(s), vessels above **13 m** in length (LOA) must not exceed a speed of 10.0 knots over the ground. Within any dynamic zone that is not subject to a speed restriction, mariners may proceed at a safe operational speed. Mariners are encouraged to take into consideration the potential for their vessel striking North Atlantic right whales when considering a “safe operational speed” during navigation.

SEASONAL MANAGEMENT AREAS

Seasonal management area 1 (SMA-1) and seasonal management area 2 (SMA-2) are speed restriction areas located north and south of dynamic shipping zone E, respectively.

Within seasonal management areas, vessels above **13 m** in length (LOA):

- must restrict their speed so as not to exceed 10.0 knots over the ground from April 16th to June 24th, 2025; **and**
- are allowed to proceed at a safe operational speed from June 25th to November 15th, 2025, unless a North Atlantic right whale is detected. If a whale is detected, a speed restriction of 10.0 knots over the ground will be triggered for 15 days from the date of detection. In the event of a new North Atlantic right whale detection occurring in the last 7 days of the 15-day slowdown period, the speed restriction will be extended for an additional 15 days from the date of the new detection. This would continue until no North Atlantic right whales are detected.

Coordinates for the SMA-1:

- 49° 04' N 062° 00' W
- 49° 04' N 061° 00' W
- 48° 10.5' N 061° 00' W
- 48° 35' N 062° 00' W

Coordinates for the SMA-2:

- 48° 24' N 062° 00' W
- 48° 03' N 061° 07.5' W
- 47° 58.1' N 061° 03.5' W
- 47° 26.69' N 062° 00' W

RESTRICTED AREA

In the summer months, an important proportion of the total North Atlantic right whale population gathers for feeding and surface activity near the [Shediac Valley](#). Since this makes the North Atlantic right whale more susceptible to vessel collisions, a mandatory restricted area will be implemented in and near the Shediac Valley and will come into force once 80% of the restricted area is closed to fishing for the season as per the [Department of Fisheries and Oceans' right whale closure protocol](#) or at the latest on June 16th, 2025. The restricted area will be lifted on September 26, 2025, unless North Atlantic right whale detections are reported in high number, which would extend the restricted area beyond September 26.

The size and location of the area are determined based on historical detection data of North Atlantic right whales. All necessary details can be found in the *Interim Order No.3 for the Protection of North Atlantic Right Whales (Eubalaena Glacialis) in the Gulf of St. Lawrence, 2025*. Triggering and lifting of the restricted area will be communicated to mariners through NAVWARNs and notices to fish harvesters.

Vessels above **13 m** in length (LOA) will be required to:

- avoid the area unless they are part of the exceptions listed in the *Interim Order No.3 for the Protection of North Atlantic Right Whales (Eubalaena Glacialis) in the Gulf of St. Lawrence, 2025*;
- transit the area at a speed not exceeding 8.0 knots over the ground if they are part of the exceptions.

The following exceptions will apply to the restricted area. The following listed vessels can travel through the area at not more than 8.0 knots over the ground:

- A vessel being used for commercial fishing;
- A vessel being used for fishing under the authority of a licence issued under the *Aboriginal Communal Fishing Licences Regulations*;
- A vessel being used for research purposes on behalf of the Government of Canada
- A vessel being used as part of the Department of Fisheries and Oceans' Marine Mammal Response Program to assist a marine mammal or sea turtle in distress or to access or retrieve a deceased marine mammal or sea turtle;
- A vessel authorized by the Government of Canada to retrieve or identify the location of abandoned or lost fishing gear;
- A vessel involved in pollution response operations;
- A vessel avoiding immediate or unforeseen danger;
- A vessel involved in research relating to right whales as part of a project that has received funding from the Government of Canada.

The following vessels can travel through the restricted area at a speed over 8.0 knots, but below 10.0 knots over the ground as required by the static speed restriction zone:

- A vessel being used by an employee of the Government of Canada or peace officer who is performing their duties.

Coordinates for the restricted area:

- 48°31.8' N 063°39.6' W
- 48°24.72' N 063°17.88' W
- 47°18.84' N 064°10.8' W
- 47°27.18' N 064°30.72' W

Inclement weather exception

Mariners will be notified in advance via a NAVWARN should the speed restriction status change in any zone or area, due to inclement weather.

Within any zone or area that is no longer subject to a speed restriction due to adverse weather conditions, mariners may proceed at a safe operational speed. Mariners are however encouraged to take into consideration the potential for their vessel striking North Atlantic right whales when considering a “safe operational speed” during navigation.

*Non-excepted vessels are still prohibited from transiting through the restricted area.

VOLUNTARY SEASONAL SLOWDOWN IN CABOT STRAIT

To coincide with the North Atlantic right whales entering and exiting the Gulf of St. Lawrence in large numbers, a voluntary seasonal slowdown is being put in place in Cabot Strait from April 16th to June 24th, 2025, and from September 3rd to November 15th, 2025.

- During these periods, vessels above 13 m in length (LOA) are requested to voluntarily reduce their speed as to not exceed 10.0 knots over the ground.

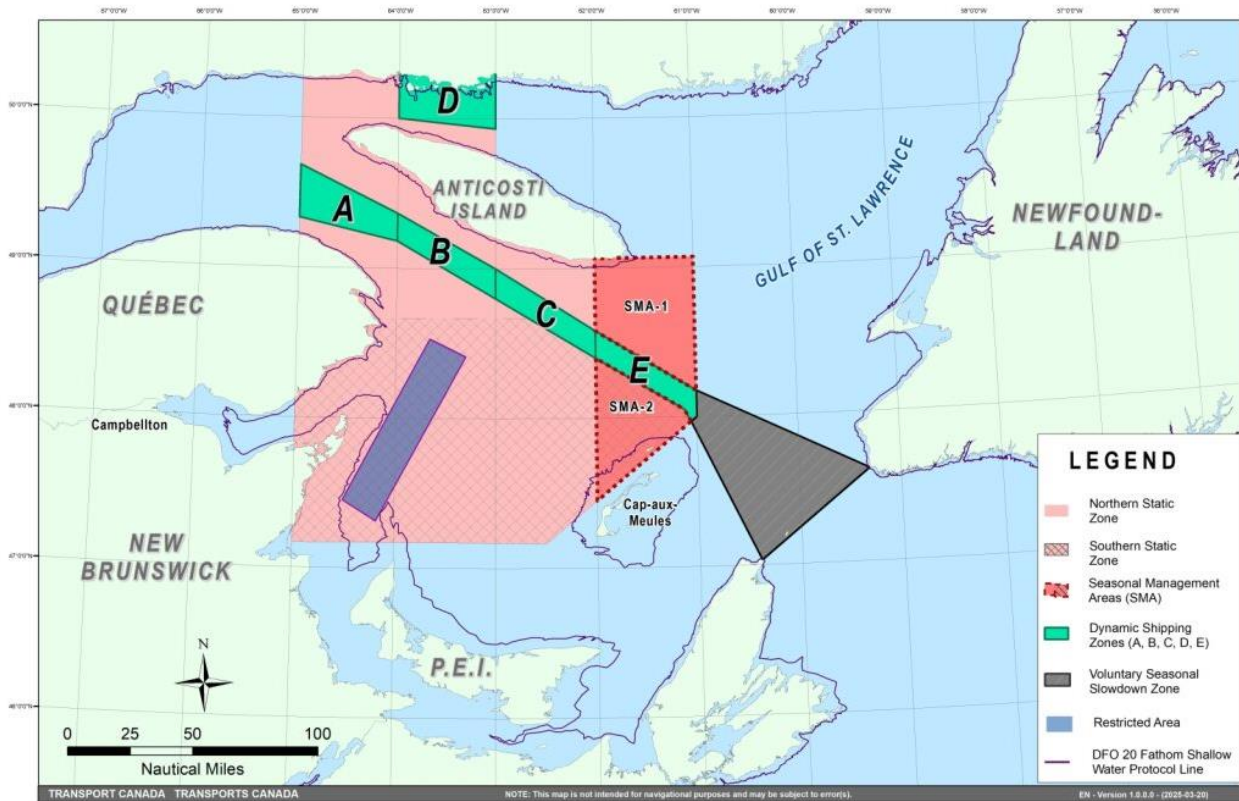
Voluntary seasonal slowdown zone coordinates:

- 48° 10.5' N 061° 00' W
- 47° 37.2' N 059° 18.5' W
- 47° 02' N 060° 23.7' W
- 47° 58.1' N 061° 03.5' W
- 48° 00' N 061° 00' W

Map of the Gulf of St. Lawrence

The following map shows

- the static zones (north and south), in pink;
- the dynamic shipping zones (A, B, C, D and E), in green;
- the seasonal management areas, in dark pink;
- the voluntary seasonal slowdown zone, in grey;
- the restricted area, in dark blue; and
- the 36.57 m (20 fathom) shallow water protocol line.



This map is for visual representation only and is not to be used for navigation or enforcement.

ROSEWAY BASIN – AREA TO BE AVOIDED

The Roseway Basin, located approximately 20 nautical miles south of Cape Sable Island, Nova Scotia, is a critical habitat for North Atlantic right whales, which have been observed to gather in the area on a seasonal basis in Canadian waters. This critical habitat is also located near key shipping routes. In 2007, Canada, with the support of many groups with varied interests, proposed to the International Maritime Organization (IMO) the establishment of a seasonal Area to be Avoided in the Roseway Basin to protect North Atlantic right whales, which IMO accepted and adopted.

To reduce the risk of vessels colliding with North Atlantic right whales, it is recommended that vessels of 300 gross tonnages and more, in transit during the period of June 1 through December 31, avoid the Roseway Basin area. Smaller vessels are also encouraged to avoid passage through this area. If passage is necessary within the Area to be Avoided, it is recommended that all mariners decrease their vessel speed to no more than 10 knots, when safe to do so.

Roseway Basin coordinates:

- 43° 16' N 064° 55' W
- 42° 47' N 064° 59' W
- 42° 39' N 065° 31' W
- 42° 52' N 066° 05' W

BAY OF FUNDY – VOLUNTARY SLOWDOWN

The Grand Manan Basin located in the Bay of Fundy is identified as a critical habitat for the North Atlantic right whale. When North Atlantic right whales are detected in the Bay of Fundy shipping lanes and near the Grand Manan Basin area, the Fundy Traffic will ask vessels to voluntarily slowdown to 10 knots via VHF channel 12 or 14 at corresponding Calling-in-Points.

NAVWARN BROADCASTS

The Canadian Coast Guard issues NAVWARNs:

- by radio broadcast; and
- online at [Canada's Maritime Information Portal](#) and its [Navigational Warnings](#) site, using the [North Atlantic Right Whale](#) category.

Mariners must ensure they have accurate and up-to-date information about the protection of the North Atlantic right whale, as in all applicable NOTMARs and NAVWARNs.

For the North Atlantic right whale speed restrictions, the NAVWARN(s) currently in effect will be provided to vessels subject to the *Vessel Traffic Services Zone Regulations* or the *Eastern Canada Vessel Traffic Services Zone Regulations*:

Outbound vessels will receive NAVWARNs

- at Calling-in-Point 10 (St-Laurent); or
- upon a departure downstream from the Quebec pilot station (including the Saguenay River, Chaleur Bay, Miramichi Bay, etc.)

Inbound vessels will receive NAVWARNs

- when a clearance to enter Canadian waters is granted

Vessels in transit will receive NAVWARNs

- at the last reporting point prior to entering the mandatory speed restriction zones; and/or
- at 10 nautical miles before they enter the mandatory speed restriction zones

For those vessels not subject to the above-mentioned regulations, vessel operators are required to monitor broadcasts by the Canadian Coast Guard's Marine Communications and Traffic Services network for the most up to date information. For marine radio frequencies and broadcast times, information may be found in the [Radio Aids to Marine Navigation](#) publication.

AIDS TO NAVIGATION

The Canadian Coast Guard broadcasts virtual Automatic Identification System (AIS) aids to navigation (AIS AtoN) in specific areas. These aids may notify mariners of dynamic shipping zones and/or seasonal management areas subject to speed restrictions.

Each zone is delimited by four to six virtual AIS AtoN, which can be displayed on a ship's navigation equipment, such as

- Electronic Chart Display and Information System (ECDIS);
- Electronic Chart System (ECS);
- RADAR;
- Minimum Keyboard Display (MKD); and
- Electronic Nautical Chart (ENC).

The Canadian Coast Guard broadcasts the virtual AIS AtoN only when a speed restriction is in effect in one or more testing zones.

Mariners must select the virtual AIS AtoN symbol to view a message such as “SectA1 Spd Lim 10 kt.” This message refers to a speed restriction in effect for a specific zone.

Note: This system is not the primary method of communicating this information.

COMPLIANCE AND ENFORCEMENT

Vessels must comply with the Interim Orders made pursuant to the *Canada Shipping Act, 2001*, and any NAVWARNs broadcasted and published by the Canadian Coast Guard relating to the Interim Orders, aimed at regulating the navigation for the purposes of protecting the North Atlantic right whales.

If a vessel does not comply with the Interim Orders or instructions in the NAVWARNs related to the Interim Orders, the vessel could face:

- administrative monetary penalties up to a maximum of CAN \$250,000; and/or
- penal sanctions under the *Canada Shipping Act, 2001* is liable on summary conviction to a fine of not more than CAN \$1,000,000 or to imprisonment for a term of not more than 18 months, or to both.

If a vessel appears to have violated the speed restriction, Transport Canada Marine Safety inspectors will review all information provided through AIS and seek an explanation from the master.

No exemptions to the speed restriction will be granted in advance. However, if a deviation from the speed restrictions is necessary for safety reasons, the following information must be entered into the bridge logbook:

- reason(s) for deviation;
- speed at which vessel is operated;
- latitude and longitude at time of deviation;
- time and duration of deviation; and
- master of the vessel shall sign and date the bridge logbook entry.

For any deviation, Transport Canada will review and consider reasons such as:

- navigating to ensure vessel safety;
- weather conditions;
- force majeure (unforeseeable circumstances); and
- responding to emergencies.

REPORT A NORTH ATLANTIC RIGHT WHALE SIGHTING

If you see **live, free-swimming whales**:

- **Email:** DFO.GLFWholes-BaleinesGLF.MPO@dfo-mpo.gc.ca
- When reporting sightings of North Atlantic right whales, you must include: GPS location (latitude and longitude), date and time of sighting, number of marine mammals, **photograph(s)/video(s) collected** and if possible, behavior of marine mammals observed (ex., feeding, travelling, diving).

SIGHTINGS OF ENTANGLED, INJURED OR DEAD NORTH ATLANTIC RIGHT WHALE

If you see a North Atlantic right whale (and all other marine mammals) **entangled, injured or dead**, please document and report it immediately to the regional Response Network.

- When documenting you should collect: GPS location (latitude and longitude), date and time of sighting, number of marine mammals, photograph(s)/video(s), and description of the incident to provide to the Response Network.

Southern part of the Gulf of St. Lawrence (New Brunswick, Nova Scotia & Prince Edward Island)

Marine Animal Response Society
Telephone: 1-866-567-6277

Newfoundland and Labrador

Whale Release and Strandings Newfoundland and Labrador (Tangly Whales Inc.)
Telephone: 1-888-895-3003 or 1-709-895-3003

Québec

Réseau québécois d'urgences pour les mammifères marins (RQUMM)
Telephone: 1-877-722-5346

Report a marine mammal or sea turtle incident or sighting:

Visit the website for more information on [reporting other marine mammal or sea turtle sighting](#) and incidents.

Please consult [Whale Insight](#) for the latest right whale observations.

***801/25 Canadian Hydrographic Service – Nautical Charts**

Charts	Main Title	Scale	Edition Date	Published	Cat#	Price
New Editions						
1314	Donnacona à/to Batiscan	1:40 000	2025-06-06	2025-08-08	1	\$20.00
2181	Harbours in Lake Erie/Havres dans le lac Érié	1:5 000	2025-05-02	2025-08-08	3	\$20.00
6430	East Channel, Kilometre/Kilomètre 1645 - 1710	1:50 000	2025-05-02	2025-08-15	4	\$12.00

***802/25 Canadian Hydrographic Service – Electronic Navigational Charts**

S-57 ENC Number	Chart Title	ENC Compilation Scale	Published
New Charts			
CA29PLLA (Edn 1.000)	Overview6400N07600W	1:175 000	2025-08-15
CA42QJ6A (Edn 1.000)	CA42QJ6A	1:45 000	2025-08-29
CA42QJGA (Edn 1.000)	CA42QJGA	1:45 000	2025-08-29
CA42QJSA (Edn 1.000)	CA42QJSA	1:45 000	2025-08-29
CA431JGA (Edn 1.000)	CA431JGA	1:45 000	2025-08-29
CA431JSA (Edn 1.000)	CA431JSA	1:45 000	2025-08-29
CA431K3A (Edn 1.000)	CA431K3A	1:45 000	2025-08-29
CA431KDA (Edn 1.000)	CA431KDA	1:45 000	2025-08-29
CA4AWLLA (Edn 1.000)	Transit6800N07600W	1:90 000	2025-08-15
CA4AWLWA (Edn 1.000)	Transit6800N07500W	1:90 000	2025-08-15
CA4AWM7A (Edn 1.000)	Transit6800N07400W	1:90 000	2025-08-15
CA4AWMHA (Edn 1.000)	Transit6800N07300W	1:90 000	2025-08-15
CA4B7LLA (Edn 1.000)	Transit6900N07600W	1:90 000	2025-08-15

S-57 ENC Number	Chart Title	ENC Compilation Scale	Published
CA4B7LWA (Edn 1.000)	Transit6900N07500W	1:90 000	2025-08-15
CA55FSFA (Edn 1.000)	CA55FSFA	1:11 000	2025-08-01
CA55FSGA (Edn 1.000)	CA55FSGA	1:11 000	2025-08-01
CA55GSEA (Edn 1.000)	CA55GSEA	1:11 000	2025-08-01
CA55GSFA (Edn 1.000)	CA55GSFA	1:11 000	2025-08-01
CA55GSGA (Edn 1.000)	CA55GSGA	1:11 000	2025-08-01
CA571237 (Edn 1.000)	CA571237	1:11 000	2025-08-01
CA571238 (Edn 1.000)	CA571238	1:11 000	2025-08-01
CA571239 (Edn 1.000)	CA571239	1:11 000	2025-08-01
CA571240 (Edn 1.000)	CA571240	1:11 000	2025-08-01
CA571241 (Edn 1.000)	CA571241	1:11 000	2025-08-01
CA571242 (Edn 1.000)	CA571242	1:11 000	2025-08-01
CA571243 (Edn 1.000)	CA571243	1:6 000	2025-08-15
CA571244 (Edn 1.000)	CA571244	1:6 000	2025-08-15
CA571245 (Edn 1.000)	CA571245	1:6 000	2025-08-15
CA571246 (Edn 1.000)	CA571246	1:6 000	2025-08-15
CA571247 (Edn 1.000)	CA571247	1:6 000	2025-08-15
CA571248 (Edn 1.000)	CA571248	1:6 000	2025-08-15
CA59KNUA (Edn 1.000)	Port6360N06860W	1:6 000	2025-08-29
CA59KNVA (Edn 1.000)	Port6360N06850W	1:6 000	2025-08-29
CA59LNUA (Edn 1.000)	Port6370N06860W	1:11 000	2025-08-29
CA59LNVA (Edn 1.000)	Port6370N06850W	1:6 000	2025-08-29
CA5AEHFA (Edn 1.000)	CA5AEHFA	1:6 000	2025-08-29
CA5AEHGA (Edn 1.000)	CA5AEHGA	1:6 000	2025-08-29
CA5AFHFA (Edn 1.000)	CA5AFHFA	1:6 000	2025-08-29
CA5AFHGA (Edn 1.000)	CA5AFHGA	1:6 000	2025-08-29
New Editions			
CA271060 (Edn 4.000)	CA271060	1:750 000	2025-08-01
CA43XPXA (Edn 3.000)	CA43XPXA	1:72 500	2025-08-01
CA448MTA (Edn 5.000)	Transit4600N07200W	1:11 000	2025-08-29
CA46NS2A (Edn 2.000)	CA46NS2A	1:45 000	2025-08-29
CA46YS2A (Edn 2.000)	CA46YS2A	1:45 000	2025-08-29
CA486Q8A (Edn 2.000)	CA486Q8A	1:22 500	2025-08-29
CA486Q8B (Edn 2.000)	CA486Q8B	1:22 500	2025-08-29
CA486QJA (Edn 2.000)	CA486QJA	1:90 000	2025-08-29
CA53XQ6A (Edn 2.000)	CA53XQ6A	1:2 000	2025-08-01
CA542M9A (Edn 4.000)	Port4540N07380W	1:6 000	2025-08-22
CA54BQRA (Edn 2.000)	CA54BQRA	1:2 000	2025-08-01
CA54FN1A (Edn 3.000)	Port4670N07130W	1:6 000	2025-08-29

S-57 ENC Number	Chart Title	ENC Compilation Scale	Published
CA54GSUA (Edn 2.000)	CA54GSUA	1:11 000	2025-08-01
CA55ESRA (Edn 2.000)	CA55ESRA	1:4 000	2025-08-22
CA5B1E6A (Edn 2.000)	CA5B1E6A	1:11 000	2025-08-01
CA5B1E7A (Edn 2.000)	CA5B1E7A	1:11 000	2025-08-01
CA5B2E6A (Edn 2.000)	CA5B2E6A	1:11 000	2025-08-01
CA5B2E7A (Edn 2.000)	CA5B2E7A	1:11 000	2025-08-01
Charts Permanently Withdrawn			
CA373088	Long Point to/à Port Glasgow		
CA373089	Pelee Passage to/à la Detroit River		
CA373090	Pointe aux Pins to/à Point Pelee		
CA373093	Niagara River to/à Long Point		
CA473305	Long Point Bay		
CA473413	Hopes Advance Bay	Cancelled by CA486NEA	
CA473414	Payne Bay and Approaches	Cancelled by CA473415	
CA570626	Kitimat Harbour		
CA573470	Koojesse Inlet		

***803/25 Port de Montréal – Daybeacon Permanently Discontinued**

Reference chart: 1310

The following daybeacon has been permanently discontinued:

Aid Name	LL #	Position
Masta	7348.2	45° 38' 58.0"N 073° 27' 50.9"W

(Q2025-069)

***804/25 Lac Saint-Pierre – Daybeacon Permanently Discontinued**

Reference chart: 1312

The following daybeacon has been permanently discontinued:

Aid Name	LL #	Position
Legros	7139.1	46° 14' 43.2"N 072° 52' 42.3"W

(Q2025-068)

***805/25 Jackfish Bay to/à St. Ignace Island – Unlit Buoy Repositioned**

Reference chart: 2303

The following unlit buoy has been repositioned to the following coordinates:

Aid Name	LL #	Position
McGarvey Shoal buoy J1	9948	48° 47' 11.8"N 087° 25' 03.8"W

(D2025-022)

Section 1A: Temporary and Preliminary Notices

Reminder – Comment Period for Active Preliminary Notices

This is a reminder that the comment period is still open for the following active Preliminary notices:

Notice #	Reference Chart #	Aids Affected (LL #)	Intent of Notice
Newfoundland and Labrador Coast			
606(P)/25	4679	211.81	Aid to Navigation to be Discontinued
Atlantic Coast			
708(P)/25	4118	241	Fog Signal to be Discontinued
709(P)/25	1317	1913	Aid to Navigation to be Abandoned

Please refer to the [Notices to Mariners - Monthly Summary of Temporary and Preliminary Notices](#) publication for details.

Newfoundland and Labrador Coast

Temporary Notices

No notices applicable for this edition.

Preliminary Notices

No notices applicable for this edition.

Atlantic Coast

Temporary Notices

*808(T)/25 Sorel-Tracy à/to Otterburn-Park – Obstruction : Repair Work

Reference chart: 1350

Repair work taking place during daylight hours Monday to Friday at the Turcotte Bridge since August 6, 2025. Barge and tug Jacques Arsenault are on scene. Navigation channel reduced to 25 metres and is marked and lit. Air draft reduced to 12 metres. Any vessels requiring the barge be moved to make passage under the bridge are required to give a 72 hours notice by e-mailing to m.poirier@pomerleau.ca or fanny.hebert@pomerleau.ca, and provide them with:

- Date and time of requested passage;
- vessel name and type;
- estimated speed of passage;
- length, beam, and draft of the vessel;
- their contact information.

All vessels transiting the area are requested to remain 3 metres away from the barge.

Minimum wake requested.

(NW-C-2410-25)

Preliminary Notices

Central Region: St. Lawrence Sector

Comment Submission

Comments on proposed changes in preliminary (P) notices are solicited from mariners and other interested parties within three months of the initial publication date. Following this date, the notices will be cancelled. Any objections raised must state the facts on which they are based and should include supporting information on safety, commerce and public benefit.

Comments should be directed to the following:

Superintendent
Aids to Navigation & Waterways
Canadian Coast Guard, Central Region
1550 D'Estimauville Avenue
Québec, QC G1J 5E9
Telephone: (418) 648-7450
Emails:
St. Lawrence Region: DFO.AtoNStLawrence-StLaurentAalaN.MPO@dfo-mpo.gc.ca
Great Lakes Region:
DFO.CCGCentralAtoNGreatLakes-GrandsLacsAalaNCentreGCC.MPO@dfo-mpo.gc.ca

***809(P)/25 Tadoussac à/to Cap Éternité – Aids to Navigation to be Abandoned**

Reference chart: 1203

The Canadian Coast Guard proposes to permanently abandon the following aids to navigation:

Aid Name	LL #	Position
Anse à l'Eau	1784	48° 08' 19.1"N 069° 43' 38.9"W
Anse du Portage	1784.5	48° 07' 36.6"N 069° 43' 49.6"W

Initial publication date: Friday, August 29, 2025

[Comment submission deadline](#): Thursday, November 27, 2025

(Q2025-063, 064)

***810(P)/25 Plans, Baie des Chaleurs/Chaleur Bay (côte nord/North Shore) – Aids to Navigation to be Abandoned**

Reference chart: 4921

The Canadian Coast Guard proposes to permanently abandon the following aids to navigation:

Aid Name	LL #	Position
Chandler East	1392.7	48° 20' 28.1"N 064° 39' 29.5"W
Chandler front range	1395	48° 20' 49.5"N 064° 40' 24.6"W
Chandler rear range	1396	48° 20' 54.5"N 064° 40' 30.6"W

Initial publication date: Friday, August 29, 2025

[Comment submission deadline](#): Thursday, November 27, 2025

(Q2025-065 to 067)

Inland Waters

Temporary Notices

***811(T)/25 Lac Saint-Louis – Marine works: Construction and Drilling Operations**

Reference: Notice 413(T)/24 is cancelled (Chart 1430).

Reference chart: 1430

Ongoing construction and drilling operations are taking place in the vicinity of the Île-aux-Tourtes bridge. Barges and boats are on site.

Yellow cautionary buoys temporarily established under the bridge. The areas are delimited by the following coordinates:

Area 1:		Area 2:	
Pt 1:	45° 25.215'N 73° 59.337'W	Pt 1:	45° 25.258'N 73° 58.831'W
Pt 2:	45° 25.236'N 73° 59.094'W	Pt 2:	45° 25.266'N 73° 58.750'W
Pt 3:	45° 25.187'N 73° 59.081'W	Pt 3:	45° 25.216'N 73° 58.733'W
Pt 4:	45° 25.160'N 73° 59.426'W	Pt 4:	45° 25.211'N 73° 58.820'W

Lit steel pile installed at 45° 25' 15.4"N 73° 58' 58.0"W showing 2 metres above the surface.

Suspended platform installed at 45° 25' 14.0"N 73° 58' 44.0"W, reducing bridge clearance by 4 metres.

Minimum wake.

(NW-C-0336-24, 3106-24)

***812(T)/25 Carleton Island to/au Charity Shoal – Obstruction: Submerged Object**

Reference chart: 1439

Anchor fluke reported lost at 44° 05.110'N 076° 23.880'W.

(NW-C-2383-25)

***813(T)/25 Ottawa to/à Smiths Falls – Marine Works: Bridge Construction**

Reference chart: 1512

Construction operations taking place daily, 24 hours a day at the Patterson Creek Bridge. Buoys temporarily established between Pretoria Avenue Bridge and Bank Street Bridge.

(NW-C-1827-25)

***814(T)/25 Whitby Harbour – Marine Works: Dredging Operations**

Reference chart: 2049

Dredging operations taking place from Monday to Friday during daylight hours in Whitby Harbour. Barges and tugs on site monitoring channel 16. Equipment is marked and lit.

(NW-C-2247-25)

***815(T)/25 Lake Ontario/Lac Ontario (Western Portion/Partie Ouest) – Marine Works**

Reference chart: 2077

Construction operations taking place daily 24 hours a day from August 15, 2025 until September 30, 2025 at the Toronto Hunt course. Dredges, barges, tug boats, construction equipment and sedimentation control structures will be on scene.

(NW-C-2550-25)

Preliminary Notices

Central Region

Comment Submission

Comments on proposed changes in preliminary (P) notices are solicited from mariners and other interested parties within three months of the initial publication date. Following this date, the notices will be cancelled. Any objections raised must state the facts on which they are based and should include supporting information on safety, commerce and public benefit.

Comments should be directed to the following:

Superintendent
Aids to Navigation & Waterways
Canadian Coast Guard, Central Region
1550 D'Estimauville Avenue
Québec, QC G1J 5E9
Telephone: (418) 648-7450
Emails:
St. Lawrence Region: DFO.AtoNStLawrence-StLaurentAalaN.MPO@dfo-mpo.gc.ca
Great Lakes Region:
DFO.CCGCentralAtoNGreatLakes-GrandsLacsAalaNCentreGCC.MPO@dfo-mpo.gc.ca

***816(P)/25 Bay of Quinte – Buoys to be Discontinued**

Reference chart: 2011, 2016, 2019, 2020

The Canadian Coast Guard proposes to permanently discontinue the following aids to navigation:

Aid Name	LL #	Position
Trumpour Point light buoy Q	444	44° 04' 00.0"N 077° 05' 30.0"W
Belleville Harbour light buoy Q54	469	44° 08' 57.9"N 077° 22' 22.0"W
Bay of Quinte buoy Q18	7214	44° 10' 52.2"N 077° 04' 15.0"W
Bay of Quinte buoy Q29	7218	44° 09' 52.5"N 077° 06' 54.0"W
Bay of Quinte buoy Q30	7219	44° 09' 54.8"N 077° 06' 55.0"W
Bay of Quinte buoy Q56/2	7229.5	44° 08' 55.5"N 077° 22' 56.0"W
Bay of Quinte buoy QT1	7265	44° 05' 38.7"N 077° 34' 07.6"W
Bay of Quinte buoy QT2	7266	44° 05' 38.2"N 077° 34' 05.1"W
Bay of Quinte buoy QT3	7267	44° 05' 26.8"N 077° 34' 13.5"W
Bay of Quinte buoy QT4	7268	44° 05' 26.8"N 077° 34' 10.0"W
Bay of Quinte buoy QT8	7271	44° 05' 07.2"N 077° 34' 16.6"W
Bay of Quinte buoy QT9	7271.5	44° 04' 54.7"N 077° 34' 17.0"W
Bay of Quinte buoy QT10	7272	44° 04' 54.7"N 077° 34' 12.5"W
Bay of Quinte buoy QY1	7304	44° 06' 15.2"N 077° 31' 19.1"W
Bay of Quinte buoy QY2	7305	44° 06' 17.2"N 077° 31' 18.6"W
Bay of Quinte buoy QY4	7307	44° 06' 18.2"N 077° 31' 25.1"W

Initial publication date: Friday, August 29, 2025

[Comment submission deadline](#): Thursday, November 27, 2025

(B2025-028)

Section 2: Chart Corrections

1315 - Québec à/to Donnacona - New Edition - 24-MAY-2019 - NAD 1983

22-AUG-2025

LNMD/D. 13-JUN-2025

Delete	depth of 8,1 metres (See Chart 1, I10)	46°47'33.7"N 071°13'19.9"W DFO(6411301-01)
Add	depth of 8,5 metres (See Chart 1, I10)	46°47'32.6"N 071°13'21.3"W DFO(6411301-02)

1316 - Port de Québec - New Edition - 03-APR-2020 - NAD 1983

22-AUG-2025

LNMD/D. 29-NOV-2024

Delete	depth of 8,1 metres (See Chart 1, I10)	46°47'33.7"N 071°13'19.9"W DFO(6411301-01)
Add	depth of 8,5 metres (See Chart 1, I10)	46°47'32.6"N 071°13'21.3"W DFO(6411301-02)
Delete	depth of 8 metres (See Chart 1, I10)	46°47'37.6"N 071°13'14.1"W DFO(6411301-03)
Add	depth of 8,5 metres (See Chart 1, I10)	46°47'38.3"N 071°13'14.6"W DFO(6411301-04)
Add	depth of 9,7 metres (See Chart 1, I10)	46°47'39.4"N 071°13'15.4"W DFO(6411301-05)

1317 - Continuation A - New Edition - 03-APR-2020 - NAD 1983

22-AUG-2025

LNMD/D. 07-MAR-2025

Delete	depth of 8,1 metres (See Chart 1, I10)	46°47'33.7"N 071°13'19.9"W DFO(6411301-01)
Add	depth of 8,5 metres (See Chart 1, I10)	46°47'32.6"N 071°13'21.3"W DFO(6411301-02)

1429 - Canal de la Rive Sud - New Chart - 09-APR-2010 - NAD 1983

08-AUG-2025

LNMD/D. 02-SEP-2022

Replace	green port hand spar buoy, marked AC37 with green port hand lighted spar buoy FI G, marked AC37 (See Chart 1, Qc, Q7)	45°25'20.7"N 073°43'35.9"W (Q2025047) LL(1197.5) DFO(6411291-01)
Replace	red starboard hand spar buoy, marked AC32 with red starboard hand lighted spar buoy FI R, marked AC32 (See Chart 1, Qb, Q7)	45°25'29.4"N 073°43'16.3"W (Q2025046) LL(1197.2) DFO(6411291-02)

Replace	red starboard hand spar buoy, marked AC24 with red starboard hand lighted spar buoy FI R, marked AC24 (See Chart 1, Qb, Q7)	45°25'44.6"N 073°42'25.0"W
		(Q2025045) LL(1196.3) DFO(6411291-03)

Replace	red starboard hand spar buoy, marked AC22 with red starboard hand lighted spar buoy FI R, marked AC22 (See Chart 1, Qb, Q7)	45°25'50.9"N 073°42'03.8"W
		(NW-C-1598-25,Q2025) LL(1196.2) DFO(6411291-04)

1430 - Lac Saint-Louis - New Edition - 23-NOV-2018 - NAD 1983

08-AUG-2025

LNMD. 17-JAN-2025

Replace	green port hand spar buoy, marked AC37 with green port hand lighted spar buoy FI G, marked AC37 (See Chart 1, Qc, Q7)	45°25'20.7"N 073°43'35.9"W
		(Q2025047) LL(1197.5) DFO(6411291-01)

Replace	red starboard hand spar buoy, marked AC32 with red starboard hand lighted spar buoy FI R, marked AC32 (See Chart 1, Qb, Q7)	45°25'29.4"N 073°43'16.3"W
		(Q2025046) LL(1197.2) DFO(6411291-02)

Replace	red starboard hand spar buoy, marked AC24 with red starboard hand lighted spar buoy FI R, marked AC24 (See Chart 1, Qb, Q7)	45°25'44.6"N 073°42'25.0"W
		(Q2025045) LL(1196.3) DFO(6411291-03)

Replace	red starboard hand spar buoy, marked AC22 with red starboard hand lighted spar buoy FI R, marked AC22 (See Chart 1, Qb, Q7)	45°25'50.9"N 073°42'03.8"W
		(NW-C-1598-25,Q2025) LL(1196.2) DFO(6411291-04)

1550 - Britannia Bay à/to Breckenridge - Sheet/Feuille 1 - New Edition - 27-MAY-2011 - NAD 1983

08-AUG-2025

LNMD. 27-SEP-2024

Amend	red starboard hand spar buoy, marked K4 to read red starboard hand lighted spar buoy FI R, marked K4 (See Chart 1, Qb)	45°22'28.4"N 075°50'11.3"W
		(B2025024) DFO(6605535-01)

2028 - Lake Simcoe - Sheet/Feuille 1 - New Edition - 15-JUN-2007 - NAD 1983

01-AUG-2025

LNMD. 06-NOV-2020

Add	obstruction with known depth of 0.5 metres (See Chart 1, K41)	44°32'22.1"N 079°12'48.4"W
		DFO(6605534-01)

2225 - Approaches to/Approches à Parry Sound - New Edition - 08-MAR-1991 - NAD 1927

15-AUG-2025

LNMD. 01-JUL-2016

Add	underwater rock of unknown depth, dangerous to surface navigation, Rep (2025) (See Chart 1, K13)	45°17'44.6"N 080°17'48.9"W
		DFO(6605524-01)

4003 - Cape Breton to / à Cape Cod - New Edition - 21-MAR-2003 - NAD 1983

01-AUG-2025

LNMD. 07-JUN-2024

Delete	Chart/Carte USA/É-UA 13006 (See Chart 1, A5)	42°31'33.1"N 069°02'31.2"W
		DFO(6312010-01)

Delete	Chart/Carte USA/É-UA 13006 (See Chart 1, A5)	40°07'23.9"N 069°59'37.3"W DFO(6312010-02)
Delete	note Adjoining Chart/Carte adjacente USA/É-UA 108 (See Chart 1, A20, A5)	in south border 068° 30' 00" W DFO(6312010-03)
Delete	note Adjoining Chart/Carte adjacente USA/É-UA 108 (See Chart 1, A20, A5)	in south border 061° 30' 00" W DFO(6312010-04)
4011 - Approaches to / Approches à Bay of Fundy / Baie de Fundy - New Edition - 03-JAN-2003 - NAD 1983		
01-AUG-2025		LNMD. 11-JUL-2025
Delete	Chart/Carte US13325 (See Chart 1, A5)	44°30'46.0"N 067°22'34.3"W DFO(6312010-05)
Delete	Chart/Carte US13312 (See Chart 1, A5)	44°08'22.2"N 068°02'59.6"W DFO(6312010-06)
4013 - Halifax to / à Sydney - New Edition - 06-SEP-2002 - NAD 1983		
08-AUG-2025		LNMD. 23-MAY-2025
Add	wreck Wk with known depth of 38 fathoms (See Chart 1, K26)	44°41'24.2"N 061°04'34.8"W DFO(6312013-02)
4016 - Saint-Pierre to / à St. John's - New Edition - 06-JUN-2003 - NAD 1983		
29-AUG-2025		LNMD. 22-NOV-2024
Delete	subsurface Ocean Data Acquisition System (ODAS) with known depth of 55 fathoms (See Chart 1, L25)	47°33'42.1"N 052°35'20.8"W DFO(6312008-02)
4017 - Cape Race to / à Cape Freels - New Edition - 07-MAR-2003 - NAD 1983		
29-AUG-2025		LNMD. 29-NOV-2024
Delete	subsurface Ocean Data Acquisition System (ODAS) with known depth of 55 fathoms (See Chart 1, L25)	47°33'42.1"N 052°35'20.8"W DFO(6312008-02)
4099 - Sable Island / Île de Sable: Western Portion / Partie Ouest - New Edition - 28-DEC-2001 - NAD 1983		
08-AUG-2025		LNMD. 24-DEC-2021
Add	wreck Wk with known depth of 73 metres (See Chart 1, K26)	44°14'26.0"N 060°46'38.5"W DFO(6312013-01)
4116 - Approaches to / Approches à Saint John - New Edition - 31-AUG-2007 - NAD 1983		
15-AUG-2025		LNMD. 11-JUL-2025
Add	private yellow ODAS/SADO lighted pillar buoy FI Y 4s, (Priv) (See Chart 1, Q58)	45°11'42.4"N 066°04'44.4"W DFO(6312014-01)

4117 - Saint John Harbour and Approaches / et les approches - New Edition - 29-MAY-2009 - NAD 1983

15-AUG-2025

LNMD. 06-JUN-2025

Add private yellow ODAS/SADO lighted pillar buoy FI Y 4s, (Priv)
(See Chart 1, Q58)

45°11'42.4"N 066°04'44.4"W

DFO(6312014-01)

4203 - Halifax Harbour: Black Point to / à Point Pleasant - New Edition - 28-DEC-2018 - NAD 1983

15-AUG-2025

LNMD. 28-MAR-2025

Add private yellow ODAS/SADO lighted pillar buoy FI Y 4s, (Priv)
(See Chart 1, Q58)

44°31'53.0"N 063°29'43.1"W

DFO(6312014-02)

4236 - Taylors Head to / à Shut-in Island - New Edition - 13-JUL-2001 - NAD 1983

29-AUG-2025

LNMD. 21-JUN-2024

Delete red starboard hand lighted spar buoy FI R, marked HJ2/2
(See Chart 1, Qb)

44°41'16.3"N 063°13'52.8"W

LL(564.22) DFO(6312047-01)

Reposition note 'Channel Buoyed/Chenal balisé'

from 44°42'03.9"N 063°13'20.7"W
to 44°41'16.7"N 063°13'57.6"W

DFO(6312047-02)

4237 - Approaches to / Approches de Halifax Harbour - New Edition - 28-MAY-2021 - World Geodetic System 1984

15-AUG-2025

LNMD. 04-JUL-2025

Add private yellow ODAS/SADO lighted pillar buoy FI Y 4s, (Priv)
(See Chart 1, Q58)

44°31'53.0"N 063°29'43.1"W

DFO(6312014-02)

4429 - Havre Saint-Pierre - New Edition - 12-FEB-2021 - NAD 1983

15-AUG-2025

Delete depth of 2,8 metres
(See Chart 1, I10)

50°14'09.9"N 063°36'14.1"W

DFO(6411300-01)

Add depth of 1,4 metres, Rep (2023)
(See Chart 1, I3.2)

50°14'09.9"N 063°36'14.1"W

DFO(6411300-02)

4530 - Hamilton Sound: Eastern Portion / Partie-est - New Edition - 15-MAR-2002 - NAD 1983

15-AUG-2025

LNMD. 02-MAY-2025

Amend DW3 to read DX3 against green port hand lighted spar buoy FI G
(See Chart 1, Qc)

49°34'03.4"N 054°13'58.9"W

(N2025026) LL(374.3) DFO(6312019-01)

Amend DD1 to read DX1 against green port hand lighted pillar buoy FI G
(See Chart 1, Qc)

49°33'06.8"N 054°08'35.6"W

(N2025027) LL(381) DFO(6312020-01)

4642 - Great St. Lawrence Harbour - New Edition - 08-NOV-2002 - NAD 1983

22-AUG-2025

LNMD. 10-JAN-2025

Delete wreck showing a portion of superstructure, with legend PA
(See Chart 1, K24, B7)

46°55'00.2"N 055°23'12.5"W

DFO(6312035-01)

4642 - Great St. Lawrence Harbour: Inner Portion / Partie Intérieure - New Edition - 08-NOV-2002 - NAD 1983

22-AUG-2025

LNMD/D. 10-JAN-2025

Delete wreck showing a portion of superstructure, with legend PA
(See Chart 1, K24, B7) 46°55'00.3"N 055°23'12.4"W
DFO(6312035-01)

4644 - Bay D'Espoir and / et Hermitage Bay - New Edition - 25-JUN-1999 - NAD 1983

29-AUG-2025

LNMD/D. 13-SEP-2024

Add marine farm limits joining 47°50'26.5"N 055°50'54.7"W
(See Chart 1, K48.1) 47°50'20.5"N 055°50'15.9"W
47°49'53.5"N 055°50'25.1"W
and 47°49'59.2"N 055°51'01.3"W
DFO(6312045-01)

Add subsurface Ocean Data Acquisition System (ODAS) with known depth of 45 metres 47°36'18.5"N 056°09'30.9"W
(See Chart 1, L25) DFO(6312046-01)

Add subsurface Ocean Data Acquisition System (ODAS) with known depth of 45 metres 47°32'11.9"N 056°05'45.9"W
(See Chart 1, L25) DFO(6312046-02)

4820 - Cape Freels to / à Exploits Islands - New Chart - 01-JUL-2005 - NAD 1983

15-AUG-2025

LNMD/D. 07-MAR-2025

Amend DD1 to read DX1 against green port hand lighted pillar buoy FI G 49°33'06.8"N 054°08'35.6"W
(See Chart 1, Qc) (N2025027) LL(381) DFO(6312020-01)

4827 - Hare Bay to / à Fortune Head - New Chart - 13-AUG-2004 - NAD 1983

29-AUG-2025

LNMD/D. 27-JUN-2025

Add subsurface Ocean Data Acquisition System (ODAS) with known depth of 45 metres 47°36'18.5"N 056°09'30.9"W
(See Chart 1, L25) DFO(6312046-01)

Add subsurface Ocean Data Acquisition System (ODAS) with known depth of 45 metres 47°32'11.9"N 056°05'45.9"W
(See Chart 1, L25) DFO(6312046-02)

4839 - Head of / Fond de Placentia Bay - New Edition - 28-JAN-2011 - NAD 1983

22-AUG-2025

LNMD/D. 20-JUN-2025

Delete obstruction, depth unknown, with legend PA Rep (2024) 47°48'02.4"N 054°06'55.2"W
(See Chart 1, K40, B7, I3.2) DFO(6312036-01)

4846 - Motion Bay to / à Cape St Francis - New Edition - 15-DEC-1995 - NAD 1983

29-AUG-2025

LNMD/D. 28-FEB-2025

Delete subsurface Ocean Data Acquisition System (ODAS) with known depth of 40 metres 47°32'31.8"N 052°34'42.6"W
(See Chart 1, L25) DFO(6312008-01)

Delete	subsurface Ocean Data Acquisition System (ODAS) with known depth of 100 metres (See Chart 1, L25)	47°33'42.1"N 052°35'20.8"W DFO(6312008-02)
Delete	subsurface Ocean Data Acquisition System (ODAS) with known depth of 20 metres (See Chart 1, L25)	47°33'12.6"N 052°34'28.2"W DFO(6312008-03)
Add	subsurface Ocean Data Acquisition System (ODAS) with known depth of 20 metres (See Chart 1, L25)	47°33'38.0"N 052°34'52.8"W DFO(6312008-04)
4862 - Carmanville to / à Bacalhoa Island and / et Fogo - New Chart - 26-DEC-2003 - NAD 1983		
15-AUG-2025		LNMD. 02-MAY-2025
Amend	DW3 to read DX3 against green port hand lighted spar buoy FI G (See Chart 1, Qc)	49°34'02.9"N 054°13'58.6"W (N2025026) LL(374.3) DFO(6312019-01)
4912 - Miramichi - New Edition - 27-JAN-2006 - NAD 1983		
29-AUG-2025		LNMD. 28-FEB-2025
Add	front range/leading light Iso Y 2s9m (See Chart 1, P20.2)	47°04'19.9"N 065°19'10.5"W (G2025104) LL(LL1200) DFO(6312040-01)
Add	rear range/leading light FI Y 3s21m with leading line and bearings 043° - 223° (See Chart 1, P20.2)	between 47°03'51.5"N 065°19'49.2"W and 47°06'28.1"N 065°16'13.7"W (G2025105) LL(LL1201) DFO(6312040-02)
Add	recommended track (See Chart 1, M3)	between 47°05'49.3"N 065°17'07.2"W and 47°06'28.1"N 065°16'13.7"W DFO(6312040-03)
4940 - Caribou Harbour - New Chart - 24-SEP-2021 - NAD 1983		
15-AUG-2025		LNMD. 16-AUG-2024
Reposition	green port hand lighted spar buoy Q G, marked SS7 (See Chart 1, Qc)	from 45°44'58.7"N 062°40'35.2"W to 45°44'59.7"N 062°40'31.4"W (G2025090) LL(914) DFO(6312015-01)
Reposition	red starboard hand lighted spar buoy Q R, marked SS8 (See Chart 1, Qb)	from 45°45'01.7"N 062°40'36.9"W to 45°45'02.5"N 062°40'33.1"W (G2025091) LL(915) DFO(6312016-01)
Reposition	red starboard hand lighted spar buoy FI R, marked SS10 (See Chart 1, Qb)	from 45°44'56.6"N 062°40'46.2"W to 45°44'57.2"N 062°40'43.5"W (G2025092) LL(915.4) DFO(6312017-01)
6021 - Lake Muskoka - Sheet/Feuille 1 - New Edition - 30-JUL-2004 - NAD 1983		
08-AUG-2025		LNMD. 17-MAY-2024
Add	underwater rock of unknown depth, dangerous to surface navigation with legend, Rep (2025) (See Chart 1, K13)	44°59'03.1"N 079°22'04.7"W DFO(6605536-01)

6217 - Ptarmigan Bay and/et Shoal Lake - Sheet/Feuille 2 - New Edition - 01-MAR-2002 - NAD 1983

08-AUG-2025

LNMD. 01-SEP-2023

Add underwater rock of unknown depth, dangerous to surface navigation 49°36'53.0"N 094°46'48.1"W
(See Chart 1, K13)

DFO(6605532-02)

Affix patch 49°41'06.0"N 094°54'12.0"W

Download Patch - https://www.notmar.gc.ca/chsftp/patches/6217_6605532_3_202508061145.pdf

DFO(6605532-03)

6267 - Grindstone Point to Berens River - Sheet/Feuille 1 - New Edition - 29-MAY-2015 - NAD 1927

22-AUG-2025

LNMD. 30-JUN-2023

Add green port hand spar buoy, marked DE7 51°47'25.3"N 096°44'15.5"W
(See Chart 1, Qc)

(P2025025) DFO(6605529-01)

Reposition green port hand spar buoy, marked DE9 from 51°47'23.1"N 096°43'50.7"W
(See Chart 1, Qc) to 51°47'23.1"N 096°43'53.8"W

(P2025026) DFO(6605530-01)

7193 - Cape Hooper and Approaches/et les Approches - New Edition - 25-MAR-2016 - NAD 1983

29-AUG-2025

LNMD. 27-JUN-2025

Delete depth of 8 fathoms 68°28'54.2"N 066°32'36.9"W
(See Chart 1, I10)

DFO(6605539-01)

Delete depth of 5 fathoms 5 feet, Rep (1964) 68°27'50.0"N 066°29'08.0"W
(See Chart 1, I10)

DFO(6605539-02)

Add depth of 8 fathoms 68°27'45.0"N 066°29'08.0"W
(See Chart 1, I10)

DFO(6605539-03)

7194 - Cape Hooper to/à Arguyartu Point Including/y compris Ekalugad Fiord - New Edition - 25-MAR-2016 - NAD 1983

29-AUG-2025

LNMD. 27-JUN-2025

Delete legend, Rep (1964) 68°28'07.0"N 066°32'20.0"W
(See Chart 1, I10)

DFO(6605539-02)

8007 - Halifax to / à Sable Island / Île de Sable, Including / y compris Emerald Bank / Banc d'Émeraude and / et Sable Island Bank / Banc de l'Île de Sable - New Edition - 30-AUG-2002 - NAD 1983

08-AUG-2025

LNMD. 21-JUN-2024

Add wreck Wk with known depth of 38 fathoms 44°41'24.2"N 061°04'34.8"W
(See Chart 1, K26)

DFO(6312013-02)

8014 - Grand Bank / Grand Banc: Northeast Portion / Partie nord-est - New Edition - 25-JUL-2003 - NAD 1983

29-AUG-2025

LNMD. 29-NOV-2024

Delete subsurface Ocean Data Acquisition System (ODAS) with known depth of 47°33'42.1"N 052°35'20.8"W
55 fathoms
(See Chart 1, L25)

DFO(6312008-02)

Section 3: Radio Aids to Marine Navigation Corrections

*817/25 Radio Aids to Marine Navigation 2025 (Atlantic, St. Lawrence, Great Lakes, Lake Winnipeg, Arctic and Pacific)

Page 5-14

AMEND AS FOLLOWS:

5.8 MAFOR Decode Table

MAFOR

YYG₁G₁/ 0AAAa_m 1GDF_mW_m

YYG₁G₁/YY: Day of the month

G₁G₁: Time of commencement of forecast (UTC). Midnight is encoded as 00

0AAAa_m: The maritime area to which the whole forecast or set of forecasts refers. If the geographical name for the forecast region is used instead of the indicator AAAa_m, it shall be inserted at the place of this group.

a _m	Portion of the maritime area		
Code 0	Whole of the area AAA	Code 5	Southwest quadrant of the area AAA
Code 1	Northeast quadrant of the area AAA	Code 6	Western half of the area AAA
Code 2	Eastern half of the area AAA	Code 7	Northwest quadrant of the area AAA
Code 3	Southeast quadrant of the area AAA	Code 8	Northern half of the area AAA
Code 4	Southern half of the area AAA	Code 9	Rest of the area AAA

1GDF_mW_m G: Forecast period
D: Direction from which the wind is blowing
F_m: Wind Speed
W_m: Forecast weather

G	Forecast Period	D	Wind	F _m	Wind	W _m	Forecast Weather
Code	Descriptive	Code	Direction	Code	Knots	Code	
0	Beginning of period	0	Calm	0	0-3 0-10	0	Visibility greater than 3 nm.
1	Valid for 3 hrs	1	Northeast	1	4 11-16	1	Risk of accumulation of ice on superstructures.
2	Valid for 6 hrs	2	East	2	5 17-21	2	Strong risk of accumulation of ice on superstructure.
3	Valid for 9 hrs	3	Southeast	3	6 22-27	3	Visibility ≥ 1 nm and ≤ 3 nm
4	Valid for 12 hrs	4	South	4	7 28-43	4	Visibility < 1 nm, including fog
5	Valid for 18 hrs	5	Southwest	5	8 34-40	5	Drizzle
6	Valid for 24 hrs	6	West	6	9 41-47	6	Rain
7	Valid for 48 hrs	7	Northwest	7	10 48-55	7	Snow, or rain and snow
8	Valid for 72 hrs	8	North	8	11 56-63	8	Squally weather with or without showers.
9	Occasionally	9	Variable	9	12 64+	9	Thunderstorms

Page 5-15

AMEND AS FOLLOWS:

5.8 MAFOR Decode Table

Officer / Officier :		Return to / Envoyer à :
Ship / Navire :		Daniel Huang / Brennan Allen Tom King
Position Latitude:		Program Meteorologist / Météorologue du Programme
Position Longitude:		Marine Weather Service Programs / Programmes maritime du service météorologique
Date:		National Programs and Business Development Service Operations / Services opérationnels Programmes nationaux et développement des affaires
		Meteorological Service of Canada / Service météorologique du Canada
		Environment and Climate Change Canada / Environnement et Changement climatique Canada
		P.O. Box / Case Postale 370
		Gander, NL A1V 1W7
		Fax / Télécopieur : 709-256-6627
		Email / Courriel : Daniel.Huang@ec.gc.ca / Brennan.Allen@ec.gc.ca tom.king@ec.gc.ca

Section 4: Canadian Sailing Directions Corrections

The following **Canadian Sailing Directions** volumes have recently been updated on the [Canadian Hydrographic Service website](#).

No.	Title
Atlantic Coast	
ATL 102	Newfoundland, East and South Coasts
ATL 105	Cape Canso to Cape Sable (including Sable Island)
ATL 111	St. Lawrence River, Île Verte to Québec and Fjord du Saguenay
Pacific Coast	
PAC 201	Juan de Fuca Strait and Strait of Georgia
PAC 202	Discovery Passage to Queen Charlotte Strait and West Coast of Vancouver Island
Northern Canada	
ARC 402	Eastern Arctic

Each volume includes a section entitled “Record of Changes” which lists all updates that are incorporated during the current calendar year.

Section 5: List of Lights, Buoys and Fog Signals Corrections

The amendments are **highlighted** and deletions are **crossed out**. For general and region-specific information on the List of Lights, click on the following links: [Newfoundland and Labrador Coast](#), [Atlantic Coast](#), [Inland Waters](#) and [Pacific Coast](#).

No.	Name	Position ----- Latitude N. Longitude W.	Light Characteristics	Focal Height in m. above water	Nomi- nal Range	Description ----- Height in meters above ground	Remarks ----- Fog Signals
-----	------	--	--------------------------	--	-----------------------	--	---------------------------------

ATLANTIC COAST

GASPÉ – CHALEUR BAY (LL 1169.1 – 1426)

1200 H1478	Oak Channel range	47 04 19.9 065 19 10.5	Iso Y 2s	8.9	12	Triangular skeleton tower, red daymark with black vertical stripe. 6.9	Visible in line of range. Year round.
1201 H1478.1		223°13' 1200.0 m from front.	Fl Y 3s	21.1	13	Triangular skeleton tower, red daymark with black vertical stripe. 16.9	Flash 1 s; eclipse 2 s. Visible in line of range. Year round.

Chart:4912

Edn 08/25 (G25-104, 105)

RIVIÈRE RICHELIEU (LL 2190 – 2271.92)

2200	Saint-Ours Information light buoy PC1	Downstream of canal de Saint- Ours. 45 52 03.4 073 08 53.3	Fl Y 4s	White and orange, marked "PC1".	Privately maintained by Parks Canada. Seasonal.
							Chart:1350 Edn 08/25 (Q25-054)
2204.58	Saint-Ours Lock Cautionary light buoy DAN-Z	45 51 41.4 073 08 48.1	Fl Y 4s	Yellow, marked "DAN-Z".	Seasonal.
							Chart:1350 Edn 08/25 (Q25-060)
2204.62	Saint-Ours Lock Cautionary light buoy DAN-C	45 51 56.0 073 08 58.4	Fl Y 4s	Yellow, marked "DAN-C".	Privately maintained by Parks Canada. Seasonal.
							Chart:1350 Edn 08/25 (Q25-057)
2204.63	Saint-Ours Lock Cautionary light buoy DAN-E	45 51 56.2 073 08 56.6	Fl Y 4s	Yellow, marked "DAN-E".	Privately maintained by Parks Canada. Seasonal.
							Chart:1350 Edn 08/25 (Q25-055)
2204.64	Saint-Ours Lock Cautionary light buoy DAN-W	45 51 55.7 073 09 00.3	Fl Y 4s	Yellow, marked "DAN-W".	Privately maintained by Parks Canada. Seasonal.
							Chart:1350 Edn 08/25 (Q25-056)
2204.65	Saint-Ours Lock Cautionary light buoy DAN-AV	45 51 56.5 073 08 54.8	Fl Y 4s	Yellow, marked "DAN-AV".	Seasonal.
							Chart:1350 Edn 08/25 (Q25-058)

Notices to Mariners – Monthly Eastern Edition
Section 5: List of Lights, Buoys and Fog Signals Corrections

No.	Name	Position ----- Latitude N. Longitude W.	Light Characteristics	Focal Height in m. above water	Nomi- nal Range	Description ----- Height in meters above ground	Remarks ----- Fog Signals
-----	------	--	--------------------------	--	-----------------------	--	---------------------------------

INLAND WATERS

OTTAWA RIVER (LL 1255 – 1322)

1297.1	Deschênes Rapids Information light buoy 5	Britannia Bay. 45 22 20.4 075 48 17.4	Fl Y 4s	White and orange spar.	Seasonal.	Chart:1550 Edn 08/25 (B25-027)
1297.2	Deschênes Rapids Information light buoy 4	45 22 38.4 075 48 40.1	Fl Y 4s	White and orange spar.	Seasonal.	Chart:1550 Edn 08/25 (B25-026)
1297.3	Deschênes Rapids Information light buoy 2	Britannia Bay. 45 22 29.0 075 48 28.5	Fl Y 4s	White and orange spar.	Seasonal.	Chart:1550 Edn 08/25 (B25-025)